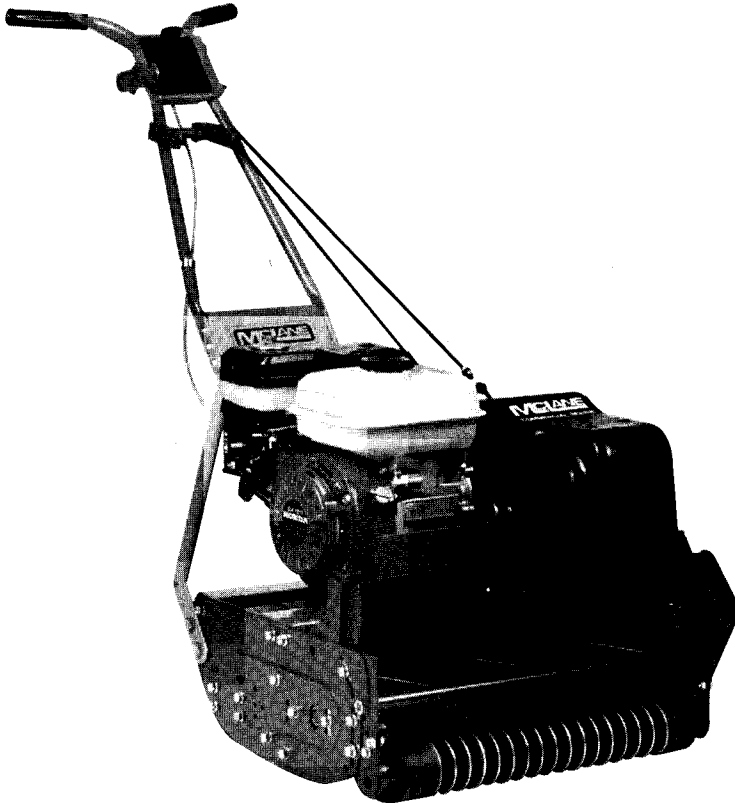
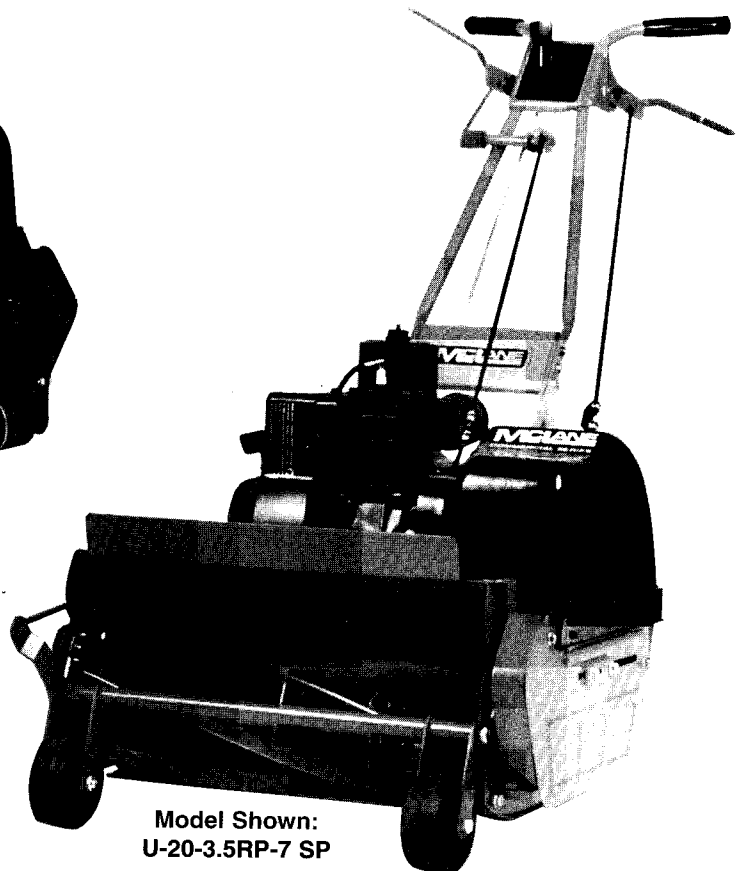


Operator's Manual & Parts List

Self-Propelled
Greensmower



2000 SERIES
Reel Lawn Mower



Covered Grass
Catcher Included

Model Shown:
U-20-3.5RP-7 SP

MCLANE

MANUFACTURING
INC.

7110 East Rosescans Ave.
Paramount, CA 90723
Telephone
(562) 633-8158 • (323) 636-8336

Table of Contents

General Safety Instructions	3	Maintenance	9
Greensmower Features	4	Exploded Diagram of Parts	10–11
Reel Mower Features	5	Parts List	12–15
Assembly	6–7	Service Records	16
Mower Operation	8		



CAUTION



This symbol marks important instructions relating to your personal safety. To avoid the possibility of injury, read and follow such instructions carefully. When the manual refers to the left or right side of the mower, it means your left and right when standing the operating position.

TWO YEAR LIMITED WARRANTY

For two years from purchase (60 days for commercial use) McLane Manufacturing Inc., will replace for the original purchaser, free of charge, any part or parts, found upon examination by any factory authorized service center, or by the factory in Paramount, California, to be defective in material or workmanship or both. All transportation charges on parts submitted for replacement under this warranty must be borne by purchaser. There are no other expressed warranties. Implied warranties, including those of merchantability and fitness for a particular purpose, are limited to two years from purchase and to the extent permitted by law. Any and all warranties are excluded. This is the exclusive remedy and liability for consequential damages. Any and all warranties are excluded to the extent exclusion is permitted by law. Some states do not allow limitations on how long an implied warranty lasts, and some states do not allow the exclusion limitation of consequential damages, so the above limitation and exclusion may not apply to you. This warranty gives you specific legal rights and you may also have other rights which vary from state to state.

It is your responsibility to follow the maintenance instruction described in the owner's manual. Routine service (cleaning, blade sharpening) is your responsibility.

NOTE: Operator abuse an improper assembly of product is not covered by any written or implied warranty. Read your owner's manual carefully.

General Safety Suggestions

Recommended by Outdoor Power Equipment Institute

DO NOT MODIFY MOWER

Unauthorized modification to the mower may impair its function and safety and affect mower life.

TRAINING

1. Read the Operating and Maintenance Instruction Manual carefully. Be thoroughly familiar with the controls and proper use of the equipment.
2. Never allow children to operate mower.
3. Keep area of operation clear of all persons, particularly small children and pets.
4. Thoroughly train anyone using the mower. Make sure all mower operators know the safety, operating and maintenance procedures.

PREPARATION

1. Thoroughly inspect the area where mower is to be used, and remove all stones, sticks, wire, bones and other foreign objects which might be picked up and thrown.
2. Do not operate mower when barefoot or wearing open sandals. Always wear substantial foot wear, and pants or slacks that cover your legs when operating mower.
3. Check fuel before starting engine. Do not fill gasoline tank indoors, or when engine is running. Wait until engine has been allowed to cool for several minutes. Clean off any spilled gasoline before starting engine.
4. Disengage clutch drive before starting engine.
5. Do not use mower unless all guards are properly in place.
6. Mow only in daylight or in good artificial light.
7. Never operate equipment in wet grass. Always be sure of your footing. Keep a firm hold on the handle and walk, never run.

OPERATION

1. Do not change engine governor settings or over speed engine.
2. Start the engine carefully. Keep hands and feet well away from blade.
3. Wear safety glasses when operating mower.

4. Stop blade when crossing gravel drive, walks or roads.
5. After striking a foreign object, stop the engine, remove wire from spark plug, thoroughly inspect mower for any damage. Repair damage before starting engine.
6. Avoid loss of control or tipping on slopes and sharp corners by reducing speed.
7. If mower should start to vibrate abnormally, stop the engine and check for the cause. Vibration is generally a warning of trouble.
8. Stop the engine whenever you leave the mower and when making repairs or inspection.
9. When repairing or inspecting make certain blade and all moving parts have stopped.
10. Shut engine off and wait until blade comes to a complete stop before removing grass that may clog blade guard.
11. Watch out for traffic when working near roadways.
12. Stay alert for uneven sidewalks, holes in terrain or other hidden hazards when using mower.
13. Remember, never operate mower unless all guards are properly in place.
14. Disengage power to clutch and stop engine before leaving mower, before making repairs, inspection or adjustments, and when transporting or not in use.

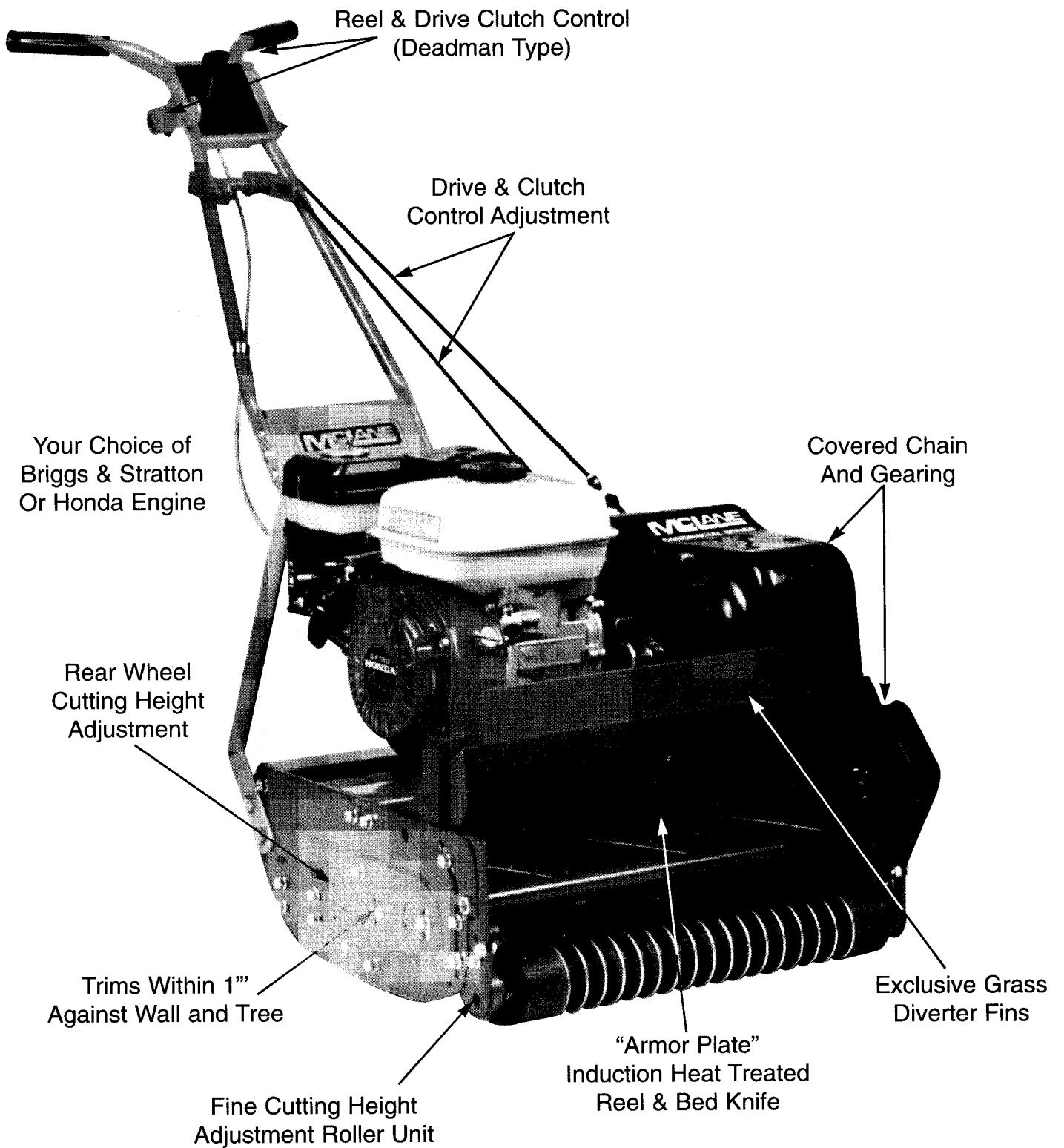


CAUTION

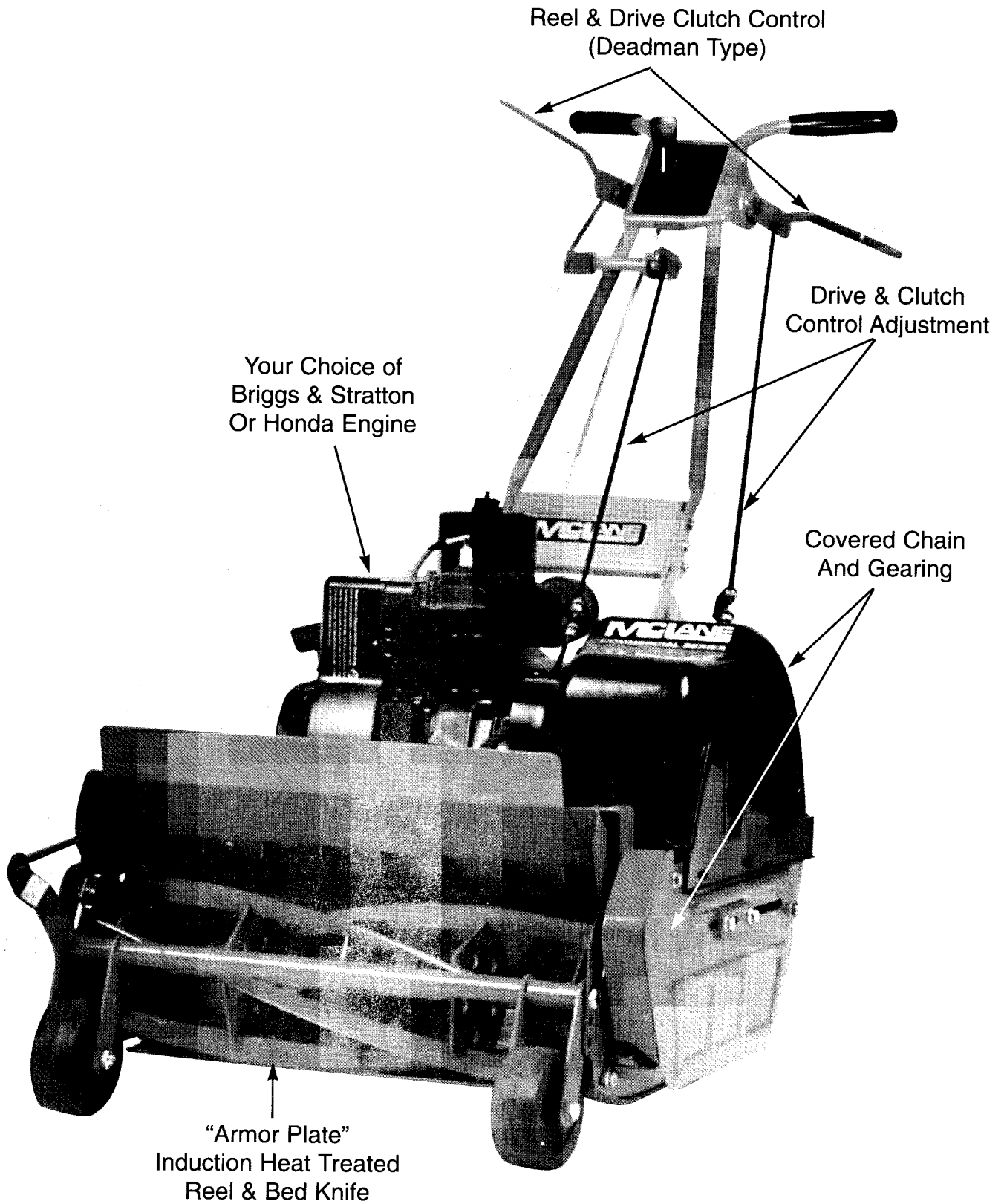


TO AVOID INJURY READ OPERATOR'S MANUAL • KNOW LOCATION & FUNCTION OF CONTROLS • MAINTAIN SAFETY DEVICES • REMOVE POTENTIAL THROWN OBJECTS • NEVER MOW NEAR PEOPLE • NEVER CARRY PASSENGERS • LOOK BEFORE BACKING • AVOID SLIPPERY OR STEEP AREAS • STOP ENGINE & BACK SLOWLY IF MACHINE STOPS • AVOID REEL UNLESS REEL & ENGINE ARE STOPPED.

Greensmower Features



Reel Mower Features



Assembly

TOOLS REQUIRED: 7/16" Wrench, Pliers, Screwdriver

NOTE: Reference to left or right side of mower is from operator's position at the handle, facing forward. The lawn mower is fully assembled except for the handle and clutch control rod. Everything is packed and shipped in one container.

HANDLE ASSEMBLY

STEP 1 Remove the grass catcher, handle assembly, and control rod from box. Make sure everything is out of the box, except the mower. Then, reach over the mower and grab the bars and pull the mower toward you. As you do so, allow the wheels to force the side of the box down on the ground. Now the box should be on the ground level and this will allow you to roll the mower out of the box with ease.

STEP 2 Attaching the handle: remove the bolts retaining the panel to the lower handle. You need six bolts to mount the handle. Two of the six bolts were those you just removed. The other four are supplied with loose hardware in the plastic bag (see Fig. 1). Take the bottom section of the handle and install a bolt through the brace, the handle section, and the panel or bracket. Put a nut on each bolt and secure the panel or bracket on both sides of the handle.

NOTE: The holes in the handle are slotted so adjustments can be made. Make sure handle is pushed down on the bolts as far as possible before bolts are tightened.

The three holes in the upper handle must be aligned with the three holes in the lower handle. Slip on the handle grips. Soaking in hot water may ease assembly.

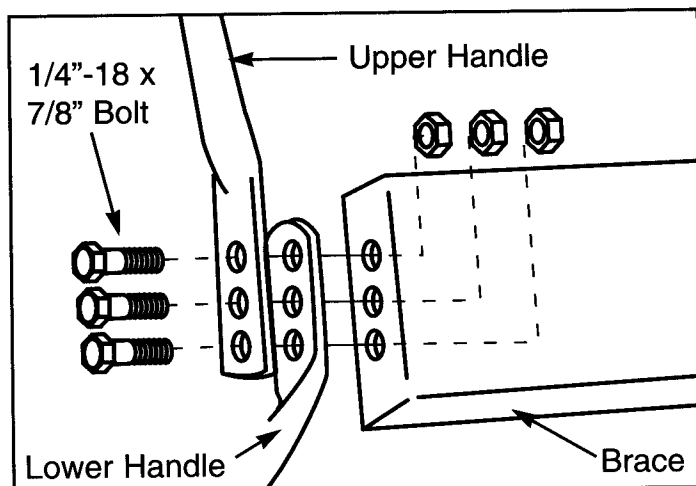


Fig. 1

DRIVE CONTROL ROD ASSEMBLY

1. Install 1/4" drive control long rod in drive control lever at hole A (see Fig. 2, 3).
2. Remove one nut from drive control short rod (see Fig. 4), and put drive control short rod into adjustment bracket, reinstall nut to drive control short rod (see Fig. 5).

CLUTCH CONTROL ROD ASSEMBLY

1. Install 1/4" clutch control rod in clutch control lever at hole B (see Fig. 2, 3).
2. Remove one nut from clutch control short rod and put clutch control short rod into clutch assembly unit, reinstall nut to clutch control short rod with adjustment bracket (see Fig. 5).

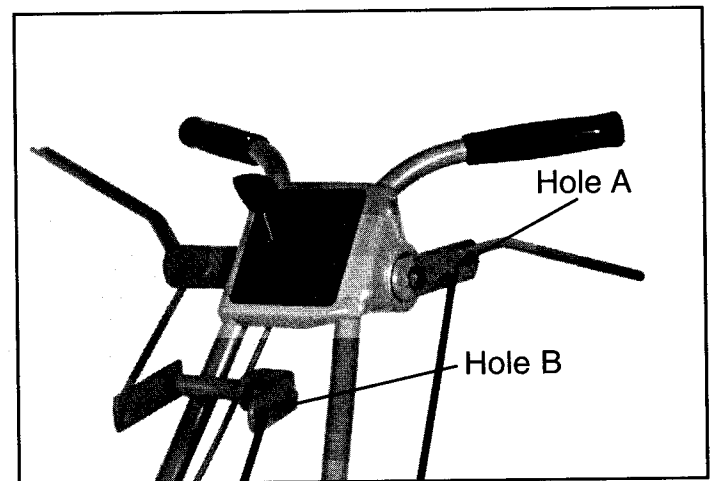


Fig. 2

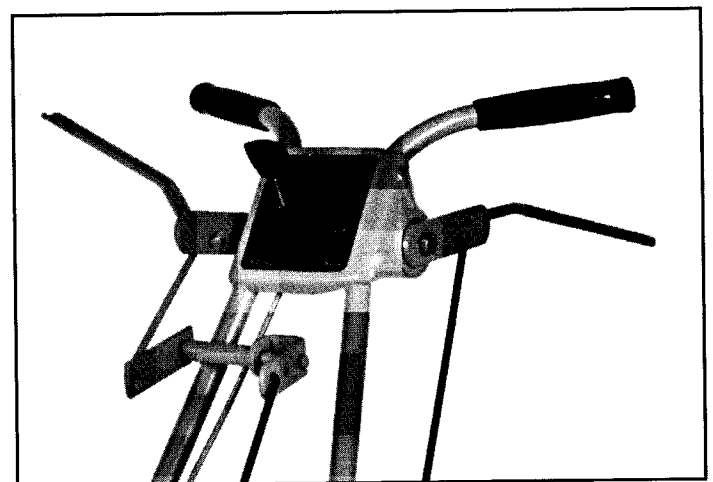


Fig. 3

Assembly

Servicing Grass Catcher

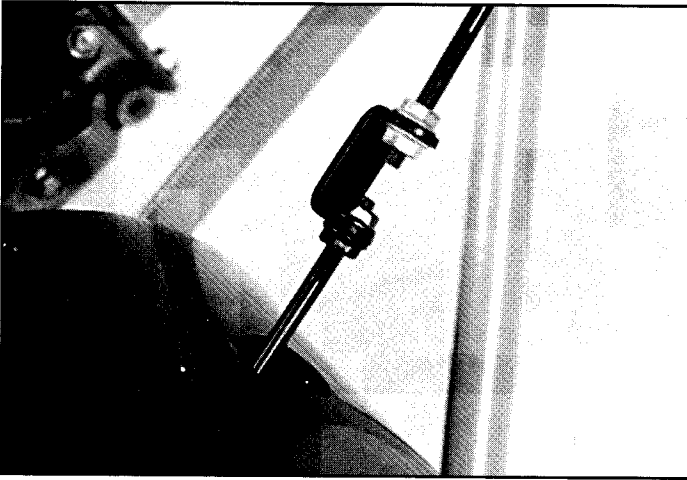


Fig. 4

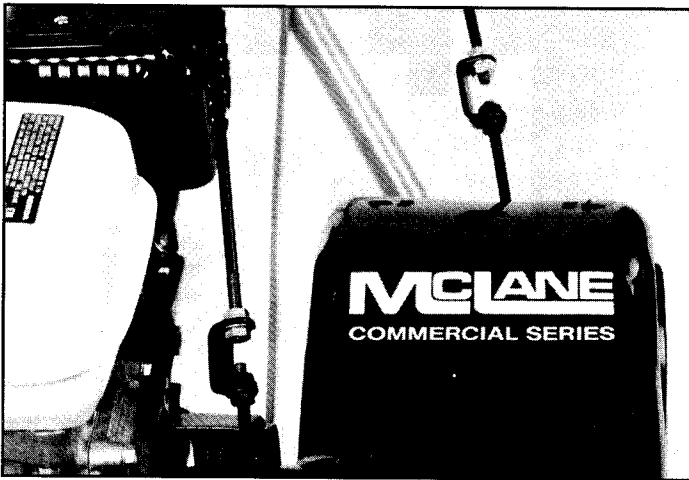


Fig. 5

IMPORTANT! DRIVE & CLUTCH ROD TENSION ADJUSTMENT

Hold the drive or clutch lever to the handle. If there is a slight tension on the belt, the adjustment should be correct. The tension should be just enough to propel the mower without the belt slipping on the pulley.

EXCESSIVE TENSION WILL REDUCE BELT LIFE AND PERFORMANCE OF THE MOWER.

NOTE: If the belt continues to slip, loosen six bolts in the handle and pull handle up slightly. Tighten bolts and test tension.

Repeat if necessary.



CAUTION



When testing belt tension, make sure no one is in front of the mower. Keep hands and feet away from moving reel, belts and chain.

INSTALLING GRASS CATCHER

1. **SEE FIG. 6:** Loosen catcher hook, nuts and bolts. Remove front nut and bolt from each catcher hook. Then raise catcher hooks and fasten both hooks with the bolts. Leave bolts loose until catcher is adjusted for proper clearance from the reel blades.
2. Attach grass catcher to the mower and make sure the catcher does not touch the reel blades. The catcher hooks are slotted so you can easily adjust the catcher so it will clear the reel blades.
3. When proper clearance is assured, tighten the nuts and bolts holding the hooks to the catcher.

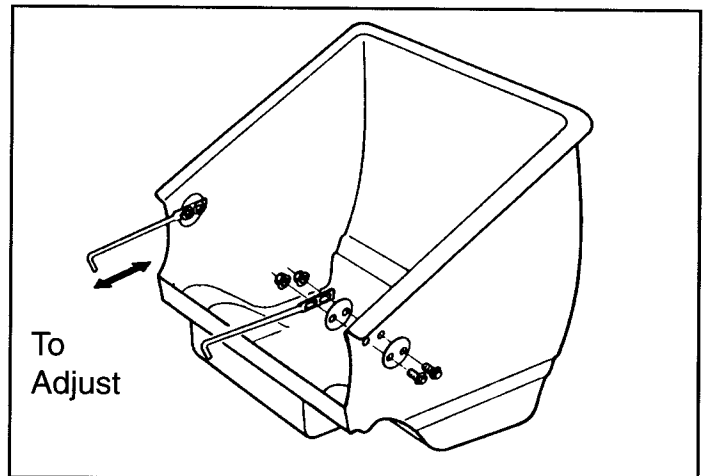


Fig. 6

Mower Operation

Correct Operation



CAUTION



Before starting engine, become familiar with all controls. Read this Operator's Manual thoroughly. Always make sure clutch lever is **NOT ENGAGED** before starting engine.



CAUTION



Always shut engine off when leaving the mower unattended, even for just a few minutes. Prevent accidents; don't give children or unauthorized persons an opportunity to operate this machine.



WARNING



Keep all shields in place. Never attempt to clear discharge areas or reel blades unless engine is shut off.

STARTING AND STOPPING THE ENGINE

1. See engine manual.

ENGAGING DRIVE BELT

1. Hold clutch control lever down to drive reel.
2. Lift drive control lever up to engage the drive belt and the mower will move forward.
3. Both the clutch control lever and the drive control lever must be kept engaged to keep the mower operating.
4. To stop forward travel release drive control lever (at left hand side).
5. Release the clutch control lever and the mower will stop.

CUTTING HEIGHT ADJUSTMENT: GREENSMOWER

The cutting height is adjustable from approximately 1/8" to 1". Adjustment is made as follows:

1. Loosen two 7/16" nuts (parts ref. no 45). One on each end of the spreader bar.(parts ref. no. 44).
2. Loosen two 5/16"x1/2" bracket bolts (parts ref. no. 50).The top bolt on the left and right side plates.
3. Loosen the 7/16" locking nut (parts ref. no. 25-B) on each Micro height adjusting bolt (parts ref. no. 25-A) . There is a adjusting bolt on the top of the right and left side plates.
4. The height adjusting brackets, left and right (parts ref. nos. 25-L and 25-R) have adjusting marks on the outside.(Marks are 1/8" apart).
5. Turn the micro adjusting bolt on one side to raise or lower the cutting height. Use the bottom of the bracket welded to the side plate as the marking line. Align a mark on the height adjusting bracket with the marking line.
6. Count the number of marks from the bottom mark and adjust the other side until mark is the same as the first side.
7. Tighten the loosened nuts and bolt.The height adjustment is now locked in place.

CUTTING HEIGHT ADJUSTMENT: 2000 SERIES

The cutting height is adjustable from approximately 3/16" to 2 1/2".

1. Remove the 7/16" nuts, one on each end of the front wheel spreader bar rod. (parts ref. no. 149). Remove the rod and the front wheel assembly bar, (parts ref. nos. 139 & 144) can be moved up or down.

2. There are three cutting height adjustment holes on the side plates. (parts ref. nos. 25 & 26). Use the top hole for lower cutting heights. Using the other two holes will increase the cutting heights.
3. Align the front wheel assembly bar with the hole you want to use, replace the spreader bar rod, replace the 7/16" and tighten them.
4. For the highest cutting heights, have the rear wheels adjusted to keep the mower level.

CHANGING MOWER SPEED

Two walking speeds are available. The mower is assembled at the factory for the normal walking speed. The walking speed can be increased by making the following changes.

1. Remove the top protective cover by removing the three bolts holding the top cover to the side cover.
2. Remove the nut holding four inch V pulley on the shaft.
3. Remove 1/4" and 7/16" spacers behind the nut and the front V pulley disc.
4. Now place 1/4" spacer on the shaft and replace front pulley disc. (1/4" spacer should be between the two pulley discs).
5. Replace 7/16" spacer.
6. Replace nut and tighten securely.

NOTE: The drive control tension must be adjusted.

1. Remove one drive control adjustment nut from the drive control adjustment bracket.
2. Remove the 1/4" drive control long rod from the adjustment bracket.
3. Now remove the 1/4" drive control long rod from the first hole to the second hole.
4. Secure the 1/4" drive control long rod back to the drive control adjustment bracket and replace the drive control adjustment nut.
5. Lift drive clutch lever to the handle, there should be a slight tension on the belt. Run the mower a short distance to make sure belt is not slipping on the pulley. (Keep hands and feet away from moving parts).
6. The tension is correct if no belt slipping occurs.
7. If the belt slips on the pulley, shorten the length of drive control rod.
8. Tighten the drive control adjustment nuts and check for belt slipping on the pulley again.
9. If belt slipping still occurs, repeat steps 7 and 8.
10. When assured the tension is correct, replace the top protective cover and secure to the side cover with the three bolts.



CAUTION



The Operation of any lawn mower can result in foreign objects thrown into the eyes, which can result in severe eye damage. Always wear safety glasses or eye shields before starting your lawn mower and while mowing. We recommend Wide Vision Safety Mask for over the spectacles or standard safety glasses.

Maintenance

SHARPENING MOWER

Normally, grinding of the reel is not recommended or necessary to insure proper cutting. Sharpen by back lapping. This is done by turning the reel in the opposite direction of normal mowing rotation. To do this, remove master link on chain that drives the reel and replace the chain as shown in Figure 7.

1. Loosen bolts on the right and left reel bearing retainers (1/2" wrench). Adjust reel bearing retainers until reel touches bed knife. Brush sharpening compound over the edges of each reel blade (use grinding compound). Replace guards. Start engine and let it idle. Engage clutch. Reel will turn backwards.
2. To check your progress, take a clean rag and remove material from edge of blades. You should see a clean shiny cutting edge along the entire blade. On extremely dull or damaged blades, it may be necessary to move reel down to where it touches the bed knife again.
3. To ensure proper sharpening and blade adjustment, use a strip of paper approximately 1" to 2" in width. Carefully insert paper between the reel and bed knife and slowly turn the reel by hand. The reel should cut paper on each blade along its entire length. When you finish, you should have a clearance of .003" between reel and bed knife. Be sure reel does not touch bed knife. Now replace chain so reel is turning in a normal mowing rotation.
4. Be sure all guards are on mower before starting engine.

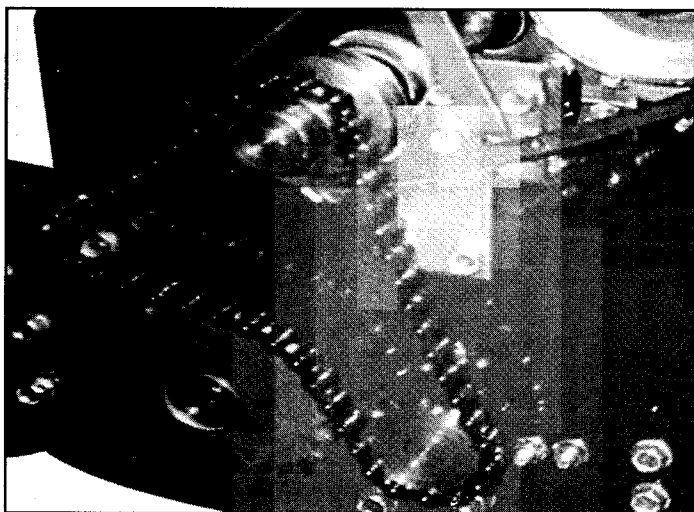


Fig. 7

GENERAL MOWER MAINTENANCE

1. Occasionally remove any grass and debris build up from reel and bed knife area. Make sure your mower engine is shut off before working on the mower.
2. Remove protective cover from top of mower and check for worn belts. Remove dirt and debris that may collect in this area. The cover is removed by removing the bolts holding the cover to the side guard.
3. Periodically check all bolts for tightness.
4. Oil drive chain frequently, approximately four hours usage. Wipe off any excess oil.

ENGINE MAINTENANCE

Check oil before operation, see engine manual.



CAUTION

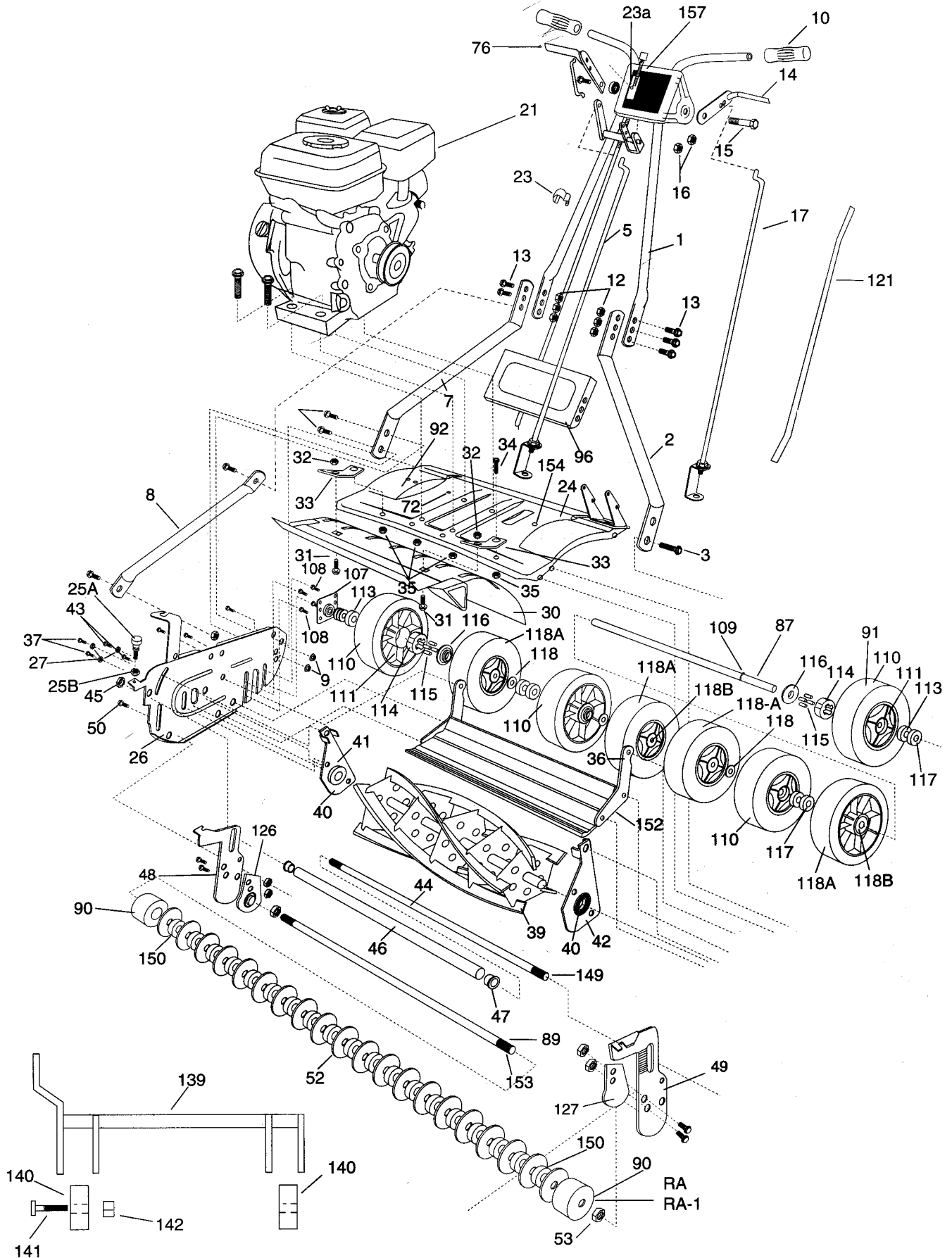


To minimize the chance of injury, perform all maintenance and adjustments on your mower with engine OFF unless instructed otherwise. Use extreme care when working near operating machinery. Do not wear loose fitting clothing. Remove watch and jewelry before beginning work and observe common safety practices when using tools.

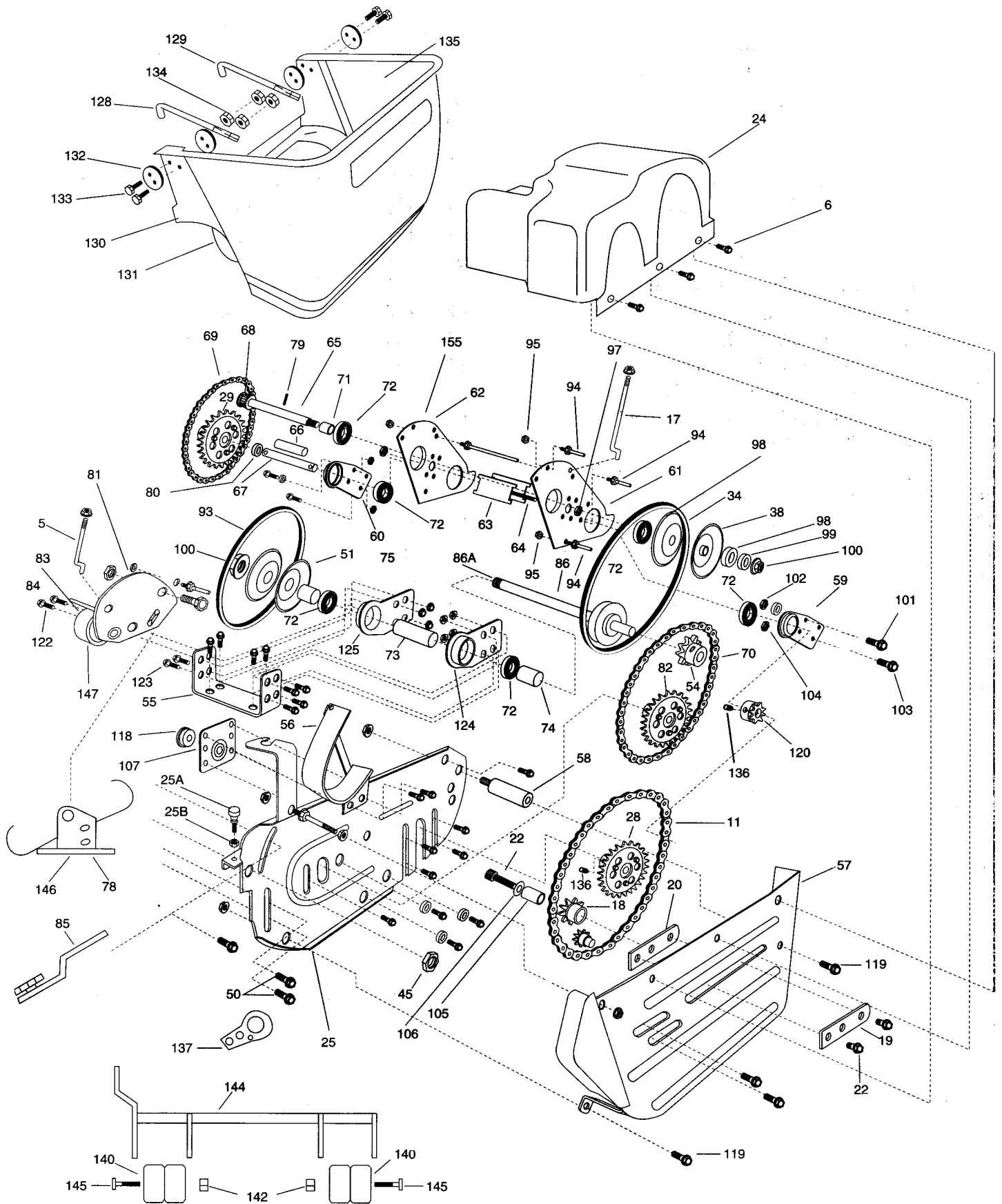
MAINTENANCE AND STORAGE

1. Check blade and engine mounting bolts at frequent intervals for proper tightness.
2. Keep all nuts, bolts and screws tight to be sure equipment is in safe working condition.
3. To reduce fire hazard, keep engine free of grass, leaves or excessive grease.
4. Never store equipment with gasoline in the tank inside of a building where fumes may reach an open flame or spark. Allow engine to cool before storing in any enclosure.
5. Keep mower in good operating condition and keep safety devices in place.

Exploded Diagram of Parts



Exploded Diagram of Parts



Parts List

20"/25" 2000 Series • 20"/25" Greensmower

REF No.	PART No.	DESCRIPTION	REF No.	PART No.	DESCRIPTION
1	1808	Handle with Welded Assembly	42	1520	Left Reel Bearing Retainer
2	1501	Left Hand Brace	43	1033	5/16"-18x1/2" Retainer Bolt (6)
3	1006-B	7/16"-14 x3/4" Brace Bolts (4)	44	1830	Front Spreader Bar Tie Rod
4	1567	Drive Bracket L.H. (Welded to one bracket)	45	1008	"7/16"-14 Nut, Spreader Bar"
4	1568	Drive Bracket R.H. (Welded to one bracket)	46	1521-A	Front Spreader Bar Spacer
5	1820	Clutch Drive Rod Right Side	47	1522-A	"Bushing, Spreader Bar (2)"
6	2028	Sheet Metal Screws #10x12"	50	1033	5/16"-18x1/2" Bracket Bolt (2)
7	1501-B	Right Hand Brace	51	1811	3" Dia. V Pulley Disc (2)
8	1805	Handle Brace Right Side	54	1814	11 Tooth Sprocket 17mm
9	1008	7/16"-14 Nut (2)	55	1813	Jack Shaft Bracket
10	1502	Handle Grip (2)	56	1815	Clutch Guard
11	1570	#41 Chain 54 Pitch	57	1574	Lower Left Side Guard
12	1015	1/4"-28 Brace Plate Nut (6)	58	1501-A	Chain Guard Spacer
13	1018	1/4"-28x7/8" Brace Plate Bolt (6)	59	1550	Lower Left Drive Bracket with Bearing
14	1504	Clutch Drive Handle	60	1551	Lower Right Drive Bracket with Bearing
15	1006	7/16"-14 x1-1/4" Drive Handle Bolt	61	1548	Upper Left Drive Bracket with Bearing
16	1008	7/16"-14 Drive Handle Nut	62	1549	Upper Right Drive Bracket with Bearing
17	1505-A	Clutch Drive Rod Left Side	63	1560	Upper Drive Bracket Brace (2)
18	1579	8 Tooth Sprocket Chain Adjustment	64	1121	7/16"-14x3-1/4" Bolt for Brace
19	1575	Outside Chain Adj. No Threads	65	1553	Front Drive Shaft
20	1576	Inside Chain Adj. Threaded Holes	66	1563	Inside Spacer for 1561 Shaft
21	1043	Engine (State Model No.)	67	1561	Shaft
22	1577	5/16"-18x1-1/4" Adj. Sprocket Bolt	68	1562	8 Tooth Sprocket 17mm
23	2013	Throttle Cable Clip	69	1080	#41 Chain (36 Pitch)
23-A	1013-97	Throttle Control B&S Engine	70	1092	#41 Chain (46 Pitch)
24	1581	Top Drive Assembly Guard (Plastic)	71	1554	5/8" Spacer
25	5001	Left Side Plate	72	1108	Replacement Bearing (6)
26	5002	Right Side Plate	73	1823	Spacer Jack Shaft (7/8"Dia.x3-3/4"L)
27	1513	Side Plate Spacer (6)	74	1824	Spacer Jack Shaft (7/8"Dia.x1.136" L)
28	1572	30 Tooth Sprocket	75	1825	Spacer Jack Shaft (.800" Dia.x1.0" L)
29	1572	30 Tooth Sprocket	76	1821	Clutch Control Handle (Right Side)
30	1809	Grass Shield	78	1816	Clutch Bracket with Guard
31	1516-A	1/4"-28x7/16" Flat Head Bolts, Grass Shield (2)	79	1555	"3/16" Dia. x 1" Retaining Pin"
32	1015	"1/4"-28 Nut, Grass Shield (2)"	80	1564	Spacer Outside 13/16"
33	1809-B	Grass Shield Bracket (2)	81	1817	Idler Bracket w/Bearing
34	1812	Drive V Belt (4L220)	82	6070-A	25 Tooth Sprocket
35	1075-A	5/16"-18 Bracket Nut (2)	83	3033-A	Idler Bearing with Cap
36	1103-A	Bedknife	84	1048-D	Idler Bearing
37	1105	5/16"-18 Taper Bolts (6)	85	1827	Front Side Chain Adj. with 8 Tooth Sprocket
38	1557	4" V Pulley Disc (2)	86	1807	Jack Shaft 9.225" L with 2-1/2" Dia. Pulley
39	1518-5	5 Blade Reel	87	1831	Rear Axle
39	1518-7	7 Blade Reel	92	1806	Deck
40	1108	Reel Bearing	93	1860	Clutch Belt 4L210
41	1519	Right Reel Bearing Retainer	94	1552	Clutch Pins (3)

Parts List

20"/25" 2000 Series • 20"/25" Greensmower

REF No.	PART No.	DESCRIPTION	REF No.	PART No.	DESCRIPTION
95	1015	1/4"-28 Clutch Nuts (3)	123	1033	5/16"-18x1/2" Jack Shaft
96	1503	Handle Brace Plate			Bracket Bolt (12)
97	1008-A	7/16"-14 Jam Nut	124	1832	Jack Shaft Bearing Retainer
98	1556	7/16" Spacer (2)			Bracket w/Bearing (Left Hand)
99	1558	1/4" Spacer	125	1833	Jack Shaft Bearing Retainer
100	1559	1/2"-20 Flange Nut			Bracket w/Bearing (Right Hand)
101	1074	5/16"-24x7/8" Stop Bolt (2)	128	1828	Catcher Hook (Right Hand)
102	1075	5/16"-24 Nut (2)	129	1829	Catcher Hook (Left Hand)
103	1823	Spacer Jack Shaft	130	1122	Polyethylene Grass Catcher
104	1075-A	5/16"-18 Nut (2)	131	1822-C	Catcher Complete with Hardware
105	1578	5/8"x1" Sprocket Bushing	132	3065	Catcher Reinforcement Washer (4)
106	1580	7/16" Flat Retaining Washer	133	1128	1/4"-28x7/8" Catcher Bolts (4)
107	1545	Rear Axle Height Adj. Bracket (2)	134	1015	1/4"-28 Catcher Nut (4)
108	1033	5/16"-18x1/2" Adj. Bracket Bolt (8)	135	1835	Catcher Cover
109	1592	3/16"x5/8" Roller Pin	136	1070	7/16"-20 Set Screws
113	7180	Drive Wheel Bearing	137	1818	Back Lap Idler with 13 Tooth
114	7137-A	Sprag (2)			Sprocket & Bearing
115	7138	Sprag Roller (8)	139	1834	Front Wheel Assembly Bar with Bushing
116	7140-A	Dust Cover (2)	140	1116-PB	Front Wheel 4" Dia. with Plastic Bushing
117	1547	Rear Wheel Spacer	141	1121	7/16"-14x3"L Bolt for Wheel
118	1589	5/8" Flat Washer			Assembly Bar (2)
119	1062	5/16"-18x3/8" Side Guard Bolts (2)	142	1008	7/16" Nut (2)
120	1562	8 Tooth Sprocket 17mm			
121	1810	Handle Brace Left Side			
122	1049	3/8"-16 Flat Head Phillips Screw			

Additional Parts List

20" Greensmower

REF No.	PART No.	DESCRIPTION	REF No.	PART No.	DESCRIPTION
25	1511-A	Left Side Plate	90	6517	Replacement Plastic Rollers (2)
25-A	1595	Micro Height Adjusting Bolt (2)	91	7016-E	Rear Wheel Smooth Tire (8)
25-B	1008	7/16"-14 Locking Nut (2)	110	1588	8" Rear Drive Wheel Complete
26	1512-A	Right Side Plate	111	7136-A	Rear Wheel Rim
36	1103GN	Bedknife	113	2036	Drive Wheel Bearing
39	1518-10	10 Blade Reel	114	7137-A	Sprag (4)
44	1113	Front Spreader Bar Tie Rod	115	7138	Sprag Roller (16)
48	1583	Right Height Adjusting Bracket, Before March 99	116	7140-A	Dust Cover (4)
48	1583-A	Right Height Adjusting Bracket, After March 99	117	1547	Rear Wheel Spacer (15)
49	1584	Left Height Adjusting Bracket, Before March 99	118	1589	5/8 Flat Washer (6)
49	1584-A	Left Height Adjusting Bracket, After March 99	118-A	1590	8" Rear Slip Wheel Complete with Tire & Space (4)
52	6518	Front Disc Roller	118-B	1591	Rear Slip Wheel Rim (4)
53	4042	5/8 - 18 Disc Roller Nut (2)	126	1801	Right Disc Roller Bracket With No.1108 Bearing
87	1800	Rear Axle	127	1802	Left Disc Roller Bracket With No.1108 Bearing
89	1804	Front Roller Shaft	150	4586	Replacement Front Disc Roller Plastic
			RA	1586	Front Roller Assemble

25" Greensmower

REF No.	PART No.	DESCRIPTION	REF No.	PART No.	DESCRIPTION
1	4800	"25" Handle with Welded Assembly"	100	1559	1/2"-20 Flange Nut (2)
10	1003	Handle Grip (2)	113	2036	Drive Wheel Bearing
25	5001-A	Left Side Plate	121	1810	Handle Brace Left Side
26	5002-A	Right Side Plate	126	1801	Right Disc Roller Bracket With No.1108 Bearing
30	4801	Grass Shield 25"	127	1802	Left Disc Roller Bracket With No.1108 Bearing
33	4801-A	Grass Shield Bracket (New)	128	4824	Right Catcher Hook
39	4907-10	10Blade Reel	129	4827	Left Catcher Hook
48	1583	Right Height Adjusting Bracket, Before March 99	130	4122	Grass Catcher (Polyethylene)
48	1583-A	Right Height Adjusting Bracket, After March 99	131	4822GN	Catcher Complete with Hardware
49	1584	Left Height Adjusting Bracket, Before March 99	135	4135	Catcher Cover
49	1584-A	Left Height Adjusting Bracket, After March 99	146	4852	Clutch Bracket with Guard (Double Belt)
51	1811	3" Dia. V Pulley Disc (4)	147	4811	Double Belt Idler with Bearing
73	4853-C	Spacer Jack Shaft 7/8"x3.750"L	149	4113	Front Spreader Bar Rod
74	4853-A	Spacer Jack Shaft 7/8"x1.240"L	151	4042	5/8"-18 Disc Roller Nut (2)
75	4853-B	Spacer Jack shaft 1"x2.175"L	152	4103GN	Greens Mower Bedknife
86	4853	Jack Shaft 17mm x 11.635" L with 2-1/2" Pulley	153	4521-A	Front Roller Drive Shaft
93	1860	Clutch Belt 4L210 (2)	154	4829	25" Deck (B&S Honda Engines)
			157	4013	Throttle Cable Honda Engine
			RA-1	1586-25	Front Roller Assembly

Additional Parts List

25" 2000 Series

REF No.	PART No.	DESCRIPTION	REF No.	PART No.	DESCRIPTION
1	4900	25" Handle with Welded Assembly	115	7138	Sprag Rollers (16)
8	1805	Handle Brace Right side	116	7140-A	Dust Cover (4)
10	1003	Handle Grip	121	1810	Handle Brace Left side
25	5001	Left Side Plate	128	4924	Right Catcher Hook
26	5002	Right Side Plate	129	4927	Left Catcher Hook
30	4901	Grass Shield 25"	130	4122	Grass Catcher Polyethylene
33	4901-A	Grass Shield Bracket (2)	131	4922	Catcher Complete with Hardware
39	4907-5	5 Blade Reel 25"	135	4135	Catcher Cover
39	4907-7	7 Blade Reel 25"	140	1116PB	Front Wheel 4" Diameter with Plastic Bushing
51	1811	3" Dia. V Pulley Disc (4)			
73	4953-C	Spacer 7/8" Dia. x 3.75"L for Jack Shaft	144	4912	Front Wheel Assembly Bar with Bushings
74	4953-A	Spacer 7/8" Dia. x 1.250" L for Jack Shaft	145	4913	7/16"-14x4-1/4"L Bolt for Wheel Assembly Bar
75	4953-B	Spacer 1" Dia. x 2.175"L for Jack Shaft			
86	4953	Jack Shaft 17mm x 11.635" L with 2.5" Dia. Pulley	147	4961	Double Belt Idler with Bearing
86A	4953-L	Lower Jack Shaft Assembly Complete	149	4914	Front Spreader Bar Rod
87	4966	Rear Axle 25"	152	4103-A	25" Bedknife Regular
93	1860	Clutch V Belt 4L210 (2)	154	4929	25" Deck (B&S and Honda Engines)
110	7135	Rear Drive Wheel Complete (4)	155	4930	Upper Drive Assembly Complete
114	7137-A	Sprag (4)			

**All Orders Under \$15.00 Are C.O.D.
When ordering parts, be sure to
specify model and part numbers.
DO NOT ORDER BY REF. NO.**

