

17" McLANE MOWER

Owner's Handbook Front Throw Reel Mower

CONTENTS

- Safety Rules
- Front Throw Reel Mower Features
- Assembly Instructions
- Operation and Maintenance
- Lawn Mower Parts Illustration
- Lawn Mower Parts List
- Trouble Shooting




MCLANE

MANUFACTURING
INC.

7110 East Rosecrans Ave.
Paramount, CA 90723
Telephone
(562) 633-8158 (323) 636-8336

Safety Rules

 **Improper use of the mower can result in injury. To reduce this possibility, give complete and undivided attention to the job at hand, and follow these safety precautions.**

Training

1. Read the Operating and Service Instruction Manual carefully. Be thoroughly familiar with the controls and proper use of the equipment.
2. Never allow children to operate a power mower.
3. Keep the area of operation clear of all persons, particularly small children and pets.

Preparation

1. Thoroughly inspect the area where the equipment is to be used and remove all stones, sticks, wire, bones and other foreign objects.
2. Do not operate equipment when barefoot or wearing open sandals. Always wear substantial footwear.
3. Check fuel before starting engine. Do not fill gasoline tank indoors, when engine is running, or while engine is still hot. Wipe off any spilled gasoline before starting engine.
4. Disengage self-propelled mechanism or drive clutch on units so equipped before starting engine (motor).
5. Never attempt to make a wheel height adjustment while engine (motor) is running.
6. Mow only in daylight or in good artificial light.
7. Never operate equipment in wet grass. Always be sure of your footing; keep a firm hold on the handle and walk, never run.

Operation

1. Do not change engine governor settings or overspeed engine.
2. Do not put hands or feet near or under rotating parts. Keep clear of discharge opening at all times.
3. Stop reel blade(s) when crossing gravel drive, walks or roads.
4. After striking a foreign object, stop the engine (motor), remove wire from spark plug, thoroughly inspect the mower for any damage, and repair the damage before restarting and operating the mower.
5. If the equipment should start to vibrate abnormally, stop the engine (motor) and check immediately for the cause. Vibration is generally a warning of trouble.
6. Stop engine (motor) whenever you leave the equipment, before cleaning mower housing, and when making any repairs or inspections.
7. When cleaning, repairing or inspecting, make certain reel and all moving parts have stopped. Disconnect spark plug wire and keep wire away from plug to prevent accidental starting.
8. Do not run engine (motor) indoors.
9. Shut engine (motor) off and wait until reel comes to a complete stop before removing grass catcher and/or unclogging chute.
10. Mow across the face of slopes, never up-and-down. Exercise extreme caution when changing direction on slopes. Do not mow excessively steep slopes.
11. Never operate mower without proper guards, plates or other safety protective devices in place.
12. Keep washout ports and other mower housing service openings closed when mowing.

Maintenance and Storage

1. Check reel and engine mounting bolts at frequent intervals for proper tightness.
2. Keep all nuts, bolts, and screws tight to be sure equipment is in safe working condition.
3. Never store equipment with gasoline in the tank inside of a building where turns may reach an open flame or spark. Allow engine to cool before storing in any enclosure.
4. To reduce fire hazard keep engine free of grass, leaves or excessive grease.
5. Check grass catcher frequently for wear or deterioration.

Two Year Limited

Warranty

For two years from purchase (60 days for commercial use) McLane Manufacturing Inc., will replace for the original purchaser, free of charge, any part or parts, found upon examination by any factory authorized service center, or by the factory in Paramount, California, to be defective in material or workmanship or both. All transportation charges on parts submitted for replacement under this warranty must be borne by purchaser. There are no other expressed warranties. Implied warranties, including those of merchantability and fitness for a particular purpose, are limited to two years from purchase and to the extent permitted by law. Any and all implied warranties are excluded. This is the exclusive remedy and liability for consequential damages. Any and all warranties are excluded to the extent exclusion is permitted by law. Some states do not allow limitations on how long an implied warranty lasts, and some states do not allow the exclusion limitation of consequential damages, so the above limitation and exclusion may not apply to you. This warranty gives you specific legal rights and you may also have other rights which vary from state to state.

It is your responsibility to follow the maintenance instructions described in the owner's manual. Routine service (cleaning, blade sharpening) is your responsibility. Defect of engine is covered by manufacturer of engine.

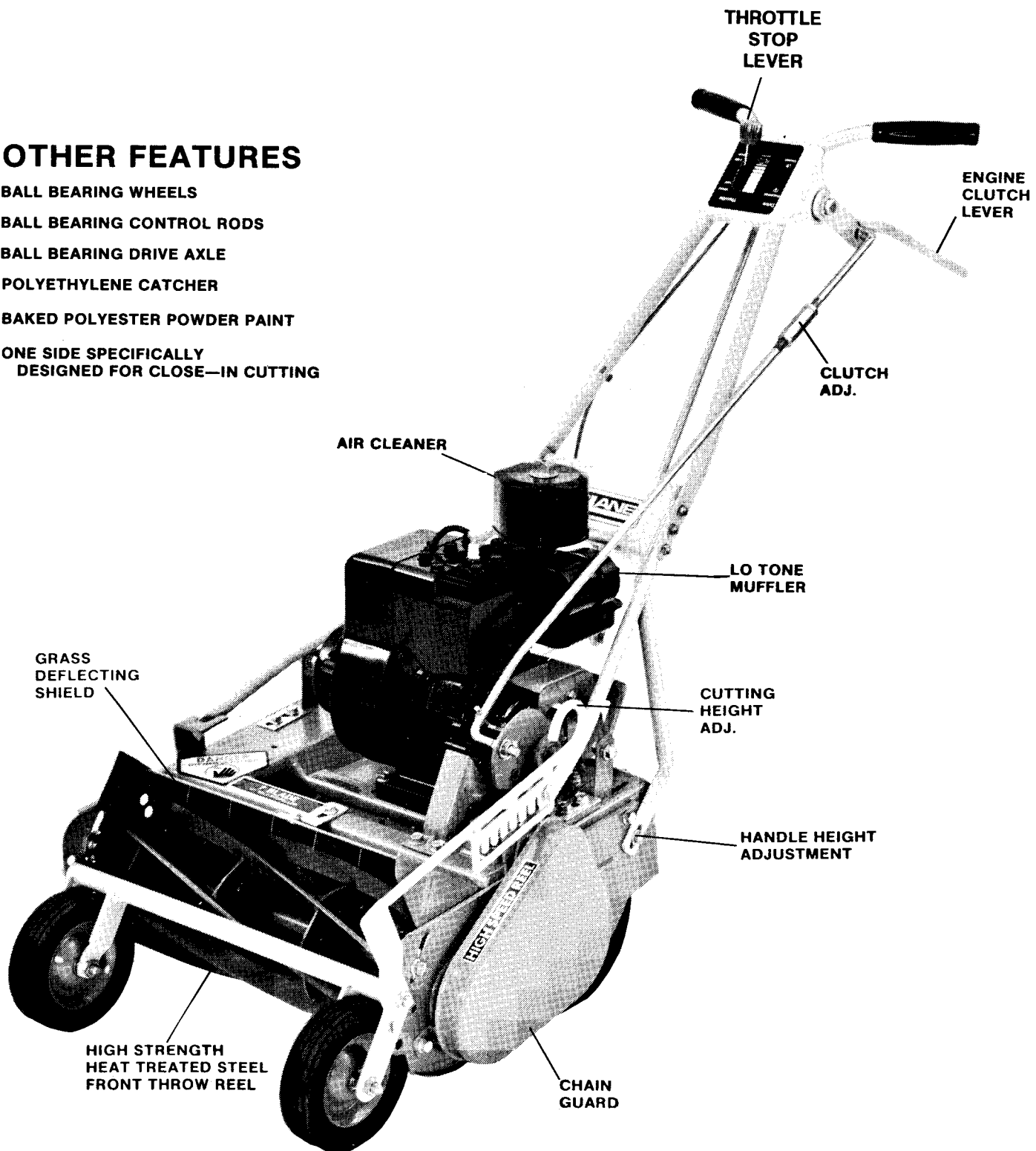
McLane Manufacturing, Inc.

Note: Operator abuse and improper assembly of product is not covered by any written or implied warranty. Read your owner's manual carefully.

Front Throw Reel Mower Features

OTHER FEATURES

- BALL BEARING WHEELS
- BALL BEARING CONTROL RODS
- BALL BEARING DRIVE AXLE
- POLYETHYLENE CATCHER
- BAKED POLYESTER POWDER PAINT
- ONE SIDE SPECIFICALLY
DESIGNED FOR CLOSE-IN CUTTING



Assembly

TOOLS REQUIRED: 7/16" Wrench, Pliers, Screwdriver, 1/2" Wrench

NOTE: Reference to Left or Right side of machine is from Operator's position at the handle, facing forward.

SHIPPING

The lawn mower, except the handle is fully assembled, packed and shipped in one container.

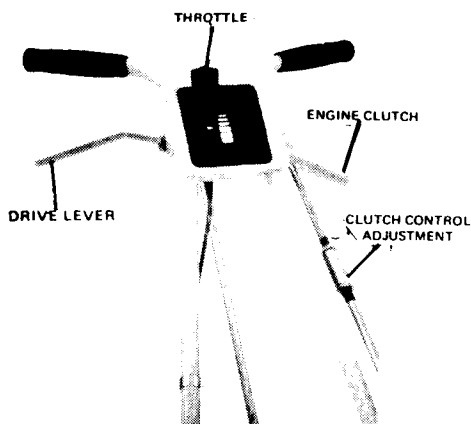


FIGURE 1

ASSEMBLING HANDLE

1. Use 6, 1/4" bolts and nuts connecting upper handle to handle support. Do not tighten. (See Fig. 1 & 2)
2. Assemble engine clutch control rod inserted in hole on the idler plate. Insert other end of rod in bearing clutch lever.
3. Check belt tension by squeezing lever if tension is too tight or too loose on belt or lever. Then adjust rod length at the belt tension tightener (Figure 1). Caution: Do not overtighten tension on belt as it will reduce the belt life.
4. After tension is set, secure rod with cotter pin.
5. Belt brake (ell rod) should ride on top of the belt. (See Fig. 4)
6. Slip on handle grips as shown. (Fig. 1) (Soaking in hot water may ease assembly.)
7. Catcher hooks - remove front nut and bolt so as to fasten the hooks with both fasteners. Leave loose - place catcher on front of mower and adjust for proper clearance. Tighten nuts and bolts.

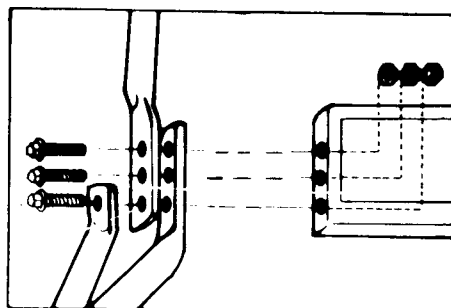


FIGURE 2

DRIVE PINION ADJUSTMENT

The drive is adjusted by the jam nuts on the yoke drive rod #21. (See Fig. 3) Adjust the yoke drive rod until drive pinions (part #49) are about 1/6" from wheels while drive handle (#4) is in down position.

With drive handle up against handle grips, wheels should be locked. If wheels slip, adjust pinions closer to wheels.

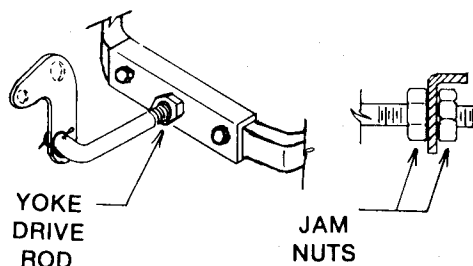


FIGURE #3

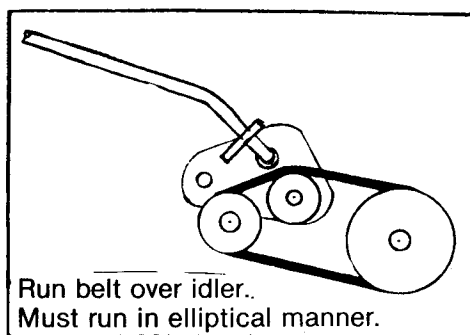


FIGURE 4

INSTALLING THROTTLE CONTROL

1. One end of the throttle control is factory installed to the carburetor. The other end needs to be installed in the upper handle.
2. Take hold of the control lever at the end of the cable and rout the throttle cable under and behind the panel located where the upper handle is bolted to the lower handle.
3. Hold the control lever at the end of the throttle cable and twist it slightly so the knob will pass through the slot in the upper handle.
4. When the knob is through the handle panel, straighten the throttle cable so the throttle control body can be pushed through the panel slot.
5. Line the complete knob and control body unit with panel slot. Use both hands and push the control body unit into the slot until it locks into place.

FUEL AND OIL

Fill crankcase with 10W-30 or 30 WT. oil (approx. 19oz.) Do not mix oil with gas.

Fill gas tank with unleaded gasoline, regular leaded is a suitable alternative. Do not use gasohol.

Read and Heed Safety Rules on page 2

CAUTION: To avoid possible damage to front wheels do not start mower before setting height adjustment. Notched height bracket at Left front of mower (Fig. 8) must be placed at desired cutting height position.

1. Before starting refer to detailed engine manufacturer's instructions.
2. Move engine choke lever to choke position pull rewind starter handle rapidly. Repeat if necessary. Move throttle up to running position, and shut off choke.
3. Lift engine clutch control and hold against handle to engage reel.
4. To disengage reel drive, immediately release lever for reel clutch.
5. To stop engine move throttle lever to STOP position.

ADJUSTMENT & SHARPENING INSTRUCTIONS

- Step 1.** Adjust reel to light uniform contact with bed knife. If mower still does not cut properly proceed to step 2.
- Step 2.** Back lap. Readjust reel to light uniform contact with bed knife.
- Step 3.** If needed grind bed knife and back lap to the reel.

Note: Normally grinding of the reel is not recommended or necessary to insure proper cutting. This is due to the extreme hardness and great strength of the reel.

Suggested cutting heights by Sunset magazine

5 BLADE REEL SYSTEM			
Grass	Low Cut	High Cut	
Kentucky Blue	1 1/2"	2 1/2"	
Rye	3/4"	1 1/4"	
Dicondra	1"	2"	
7 BLADE REEL SYSTEM			
Bermuda	3/4"	1 1/2"	
St. Augustine	1/2"	1"	
Bent Grass	1/2"	1"	
10 BLADE REEL SYSTEM			
Common Bermuda	3/4"	1 1/2"	
Hybrid	3/4"	1 1/4"	
Putting Green	3/4"	1 1/4"	

Local Conditions May Vary.

HEIGHT ADJUSTMENT

The cutting height of the mower is adjustable from 3/16" to 2 1/2" approximately. Fine adjustment is made with the notched bracket (part #73)

(Fig. 8) Additional or medium range adjustments are made by changing position of front wheel bar assembly to a different hole. (Fig. 7) This is done by removing tie rod (part #76). Note: position of parts and washers so they will be replaced in the same order.

Exceptionally high cutting may be done by adjusting rear wheels.

Stop plates (part #41) are adjusted to keep wheel travel to a minimum.

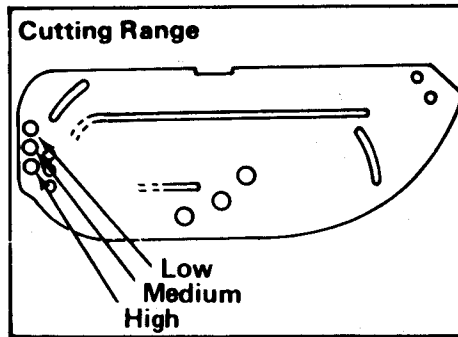


Figure 7

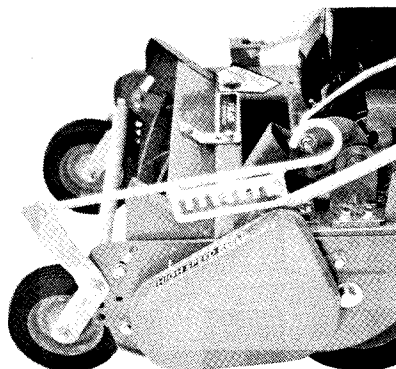


Figure 8

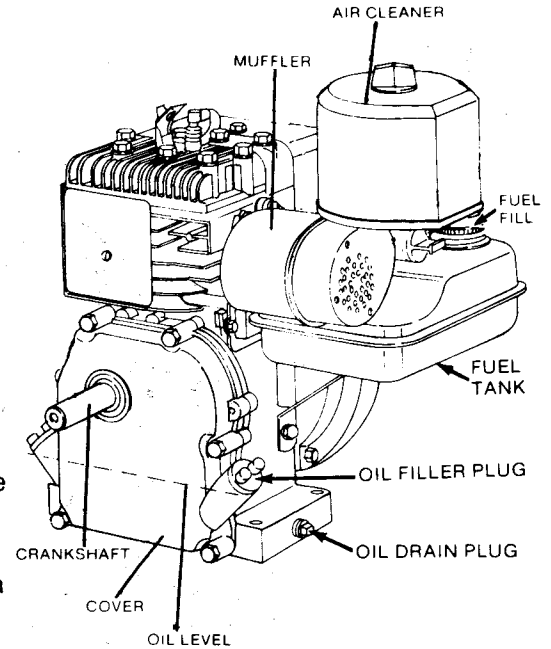


FIGURE 9

LUBRICATION

Check oil level regularly. Oil all exposed bearings, linkage and front wheels. Oil chain frequently. Reel and main drive bearings are sealed. When changing oil, tip to drain while engine is warm.

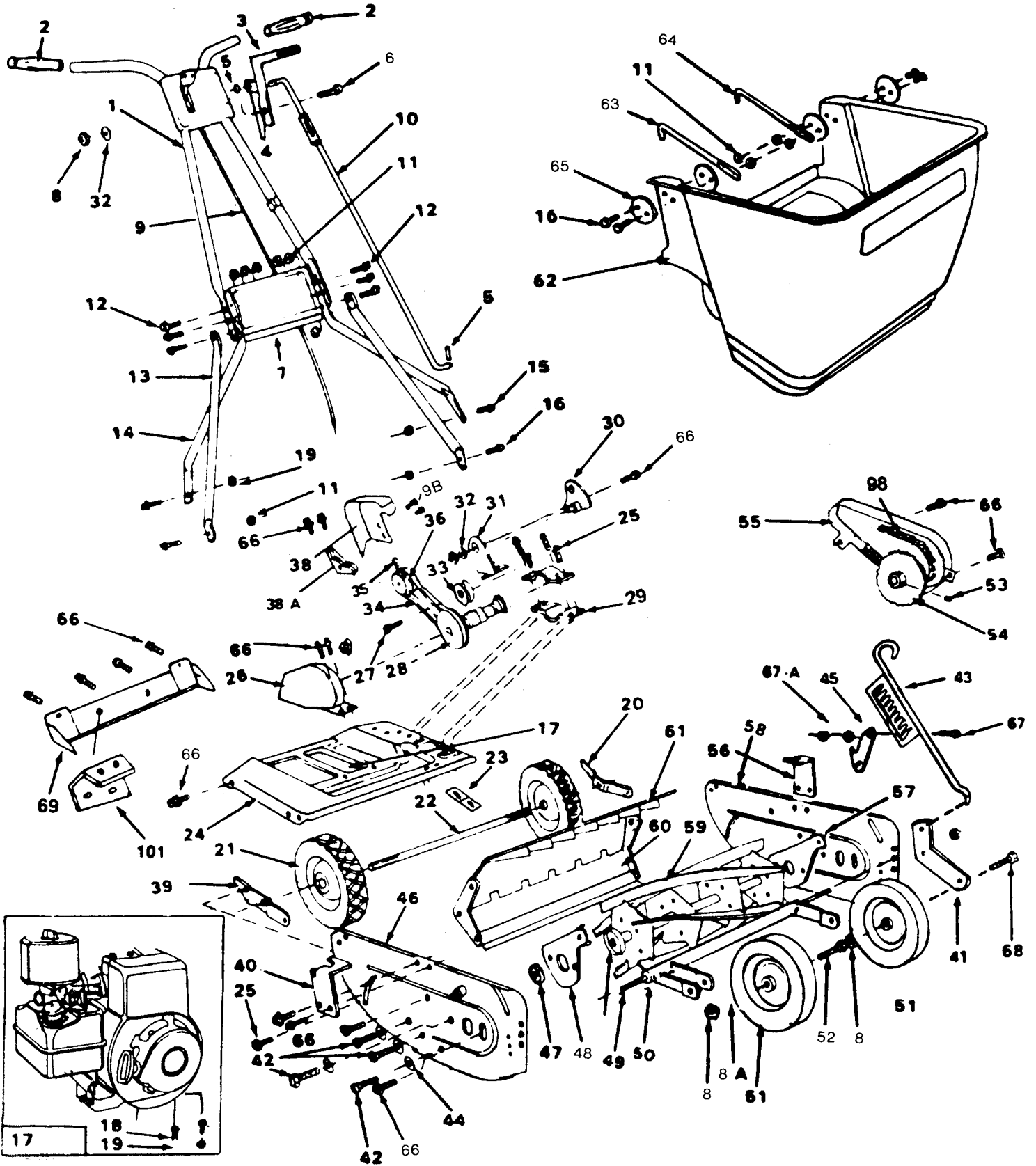
Clean or replace cartridge air cleaner, clean cooling fins (Fig. 9) clean and re-set spark plug gap and remove carbon deposits at regular intervals. Refer to engine manual for detailed instructions.

REEL MAINTENANCE

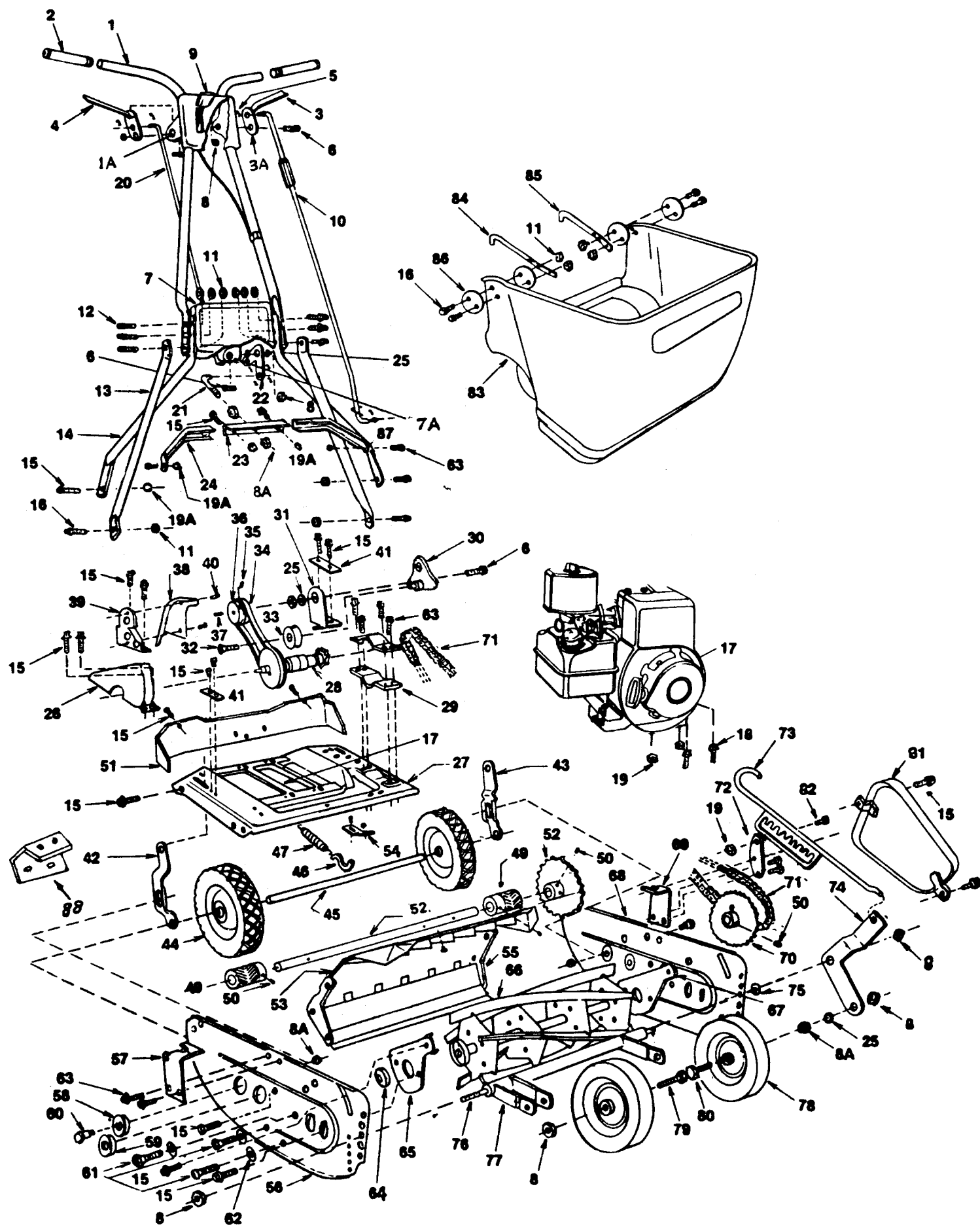
Normally grinding of the reel is not recommended or necessary to insure proper cutting. This is due to the extreme hardness and great strength of the reel.

Sharpening and back lapping, when required should always be done by a properly equipped service center.

Front Throw Reel Mower Parts Illustration - Push Models



Front Throw Reel Mower Parts Illustration 17 Self-Propelled Model



McLane

Front Throw Reel Mower Parts List 17" Self-Propelled Models

REF. NO.	PART NO.	DESCRIPTION	REF. NO.	PART NO.	DESCRIPTION
1	6001-A	Handle	46	6046	Spring Hook
1 A	1002	Bearing (1Req)	47	6047	Drive Spring
2	6002	Handle Grips	49	6049	Drive Pinions
3	6003	Clutch Lever w/Bearings	50	6050	Set Screws 7/16"-20x716"
3 A	1002	Bearings (2 Req)	51	6051	Rear Deck Guard
4	6004	Drive Control Lever	52	6052-C	Sprocket And Drive Shaft Assembly
5	6005	Cotter Pin	53	6053	Shield
6	6006	Bolt 7/16"-14x1-1/4"	54	6054	Shield Hardware
7	6007	Handle Brace Plate	55	6055	Bed Knife
7 A	1046-D	Bearing (1 Req)	56	6056	Right Side Plate
8	6008	Lock Nut	57	6057	Catcher Hook Bracket (Right)
8 A	6008-A	Jam Nut	58	6058	Plated Bearing
9	1013-97	Throttle Control – Manual Choke	59	6058	Plated Bearing
10	6010	Clutch Control Rod	60	6060	Wheel Adjuster Bolt
11	6011	Nut 1/4"-28	61	6061	Tapered Bolt
12	6012	Bolt 1/4"-28x7/8"	62	6062	Bushing For Tapered Bolt
13	6013	Handle Brace	63	6063	Bolt 5/16"-18x3/4"
14	6014	Lower Handle	64	6064	Reel Bearing
15	6015	Bolt 5/16"-18x1/2"	65	6065	Reel Retainer (Right)
16	6016	Bolt 1/4"-28x5/8"	66	6066-5	Reel, 5 Blade
17	6017	Engine Model 60102-1166-02		6066-7	Reel, 7 Blade
18	6018	Bolt 5/16"-24x1-1/2"		6066-10	Reel, 10 Blade
19	6019	Nut 5/16"-24	67	6067	Reel Retainer (Left)
19 A	6019-A	Nut 5/16"-18	68	6068	Side Plate (Left)
20	6020	Drive Control Rod	69	6069	Catcher Hook Bracket (Left)
21	6021	Yoke Drive Rod	70	6070-A	Sprocket 25 Tooth
22	6022	Drive Connecting Link	71	6071	Chain 41-44
23	6023	Center Yoke Assembly	72	6072	Support Bracket
24	6024	Side Yoke Assembly (2 Req)	73	6073	Height Adjustment Notched Bracket
25	6025	Washer	74	6074	Height Adjustment Wheel Bracket
26	6026	Front Belt Guard	75	6075	Plastic Washer
27	6027	Deck	76	6076	Tie Rod
28	6028	Jack Shaft w/Pulley & Sprocket	77	6077	Front Wheel Assembly Bar
29	6029	Housing For Jack Shaft	78	6078	Front Wheel w/Bearing 6"
30	6030	Belt Idler	79	6079	Bolt 7/16"-14x2-3/4"
31	6031	Clutch Base	80	6080	Bolt 7/16"-14x2-1/2"
32	6032	Phillips Head Screw	81	6081	Chain Guard
33	6033	Idler Bearing w/Cap	82	6082	Bolt
34	6034	Belt	83	6083	Plastic Catcher
35	6035	Allen Screw 5/16"-24x5/16"		6083-C	Catcher Complete
36	1063	Engine Pulley	84	6084	Catcher Hook (Right)
37	6037	Key For Engine Pulley Shaft	85	6085	Catcher Hook (Left)
38	6038	Back Belt Guard	86	6086	Reinforcement Washer
39	6039	Back Belt Guard Bracket	87	6087	Bushing
40	6040	Sheet Metal Screw 10x1/2 (4 Req)	88	3092	Deck Stiffener
41	6041	Stop Plates			
42	6042	Rear Wheel Adjuster (Left)			
43	6043	Rear Wheel Adjuster (Right)			
44	6044-A	Rear Wheel w/Bearing			
45	6045-A	Rear Axle			
					ACCESSORIES
			17-2R-SA		Sharpening Attachment

When ordering parts, be sure to specify model and part numbers. Do not order by Ref. No.

Service Record

DATE	COMPONENTS REPLACED

TROUBLE SHOOTING CHART

PROBLEM	CAUSE
1. <i>Engine fails to start.</i>	<ul style="list-style-type: none"> A Check fuel tank for gas. B Spark plug lead wire disconnected. C Throttle control lever not in starting position. D Check spark plug. E Carburetor improperly adjusted. Engine flooded. Remove spark plug, dry the plug, crank engine with plug removed, and throttle in off position. Replace spark plug and lead wire and resume starting procedures. F Old/stale gas. Drain and refill with fresh gas.
2. <i>Hard starting or loss of power.</i>	<ul style="list-style-type: none"> A Spark plug wire loose B Carburetor improperly adjusted. C Dirty air cleaner.
3. <i>Operation erratic.</i>	<ul style="list-style-type: none"> A Dirt in gas tank. Drain, clean and refill. B Dirty air cleaner. C Water in fuel supply. Drain and refill. D Vent in gas cap and/or carburetor plugged. Clear vent. E Carburetor improperly adjusted.
4. <i>Occasional skip (hesitates) at high speed.</i>	<ul style="list-style-type: none"> A Spark plug fouled, faulty or gap too wide. B Carburetor improperly adjusted. C Dirty air cleaner.
5. <i>Idles poorly.</i>	<ul style="list-style-type: none"> A Carburetor idle speed too slow. B Spark plug gap too close. C Carburetor idle mixture adjustment improperly set.
6. <i>Engine overheats</i>	<ul style="list-style-type: none"> A Adjust carburetor. B Remove any obstructions from air passages in shrouds. C Clean cooling fins. D Fill crankcase to proper oil level.

Notice to customers in the state of California. The engine on this unit is not equipped with a spark arresting muffler.

Warning

USE OR OPERATION OF THIS ENGINE ON ANY FOREST COVERED, BRUSH COVERED, OR GRASS COVERED LAND WITHOUT A STATE APPROVED SPARK ARRESTOR IN EFFECTIVE WORKING ORDER CONSTITUTES A VIOLATION OF THE LAW OF THE STATE OF CALIFORNIA.



7110 East Rosecane Ave.
Paramount, CA 90723
TEL: (562) 633-8158 FAX: (562) 902-0651